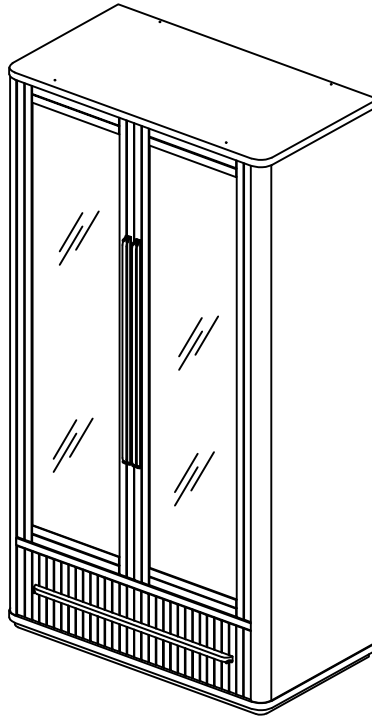


DOUBLE WARDROBE

Stock number: 3052-82

Thank you for purchasing this product. Please read the instructions carefully before use to ensure safe and satisfactory assembly of this product.

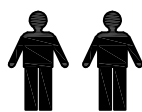


Pre-assembly preparation

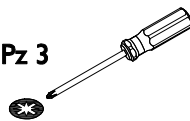
Please ensure instructions are read in full before attempting to assemble this product.

Necessary Tools : Pozi screwdriver and Phillips screwdriver

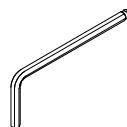
(Included)



Pz 2 or Pz 3



Ph 2



Please check the pack contents before attempting to assemble this product. A full checklist of components is given in this leaflet. If any components are missing, please contact the retailer from whom you bought this product.

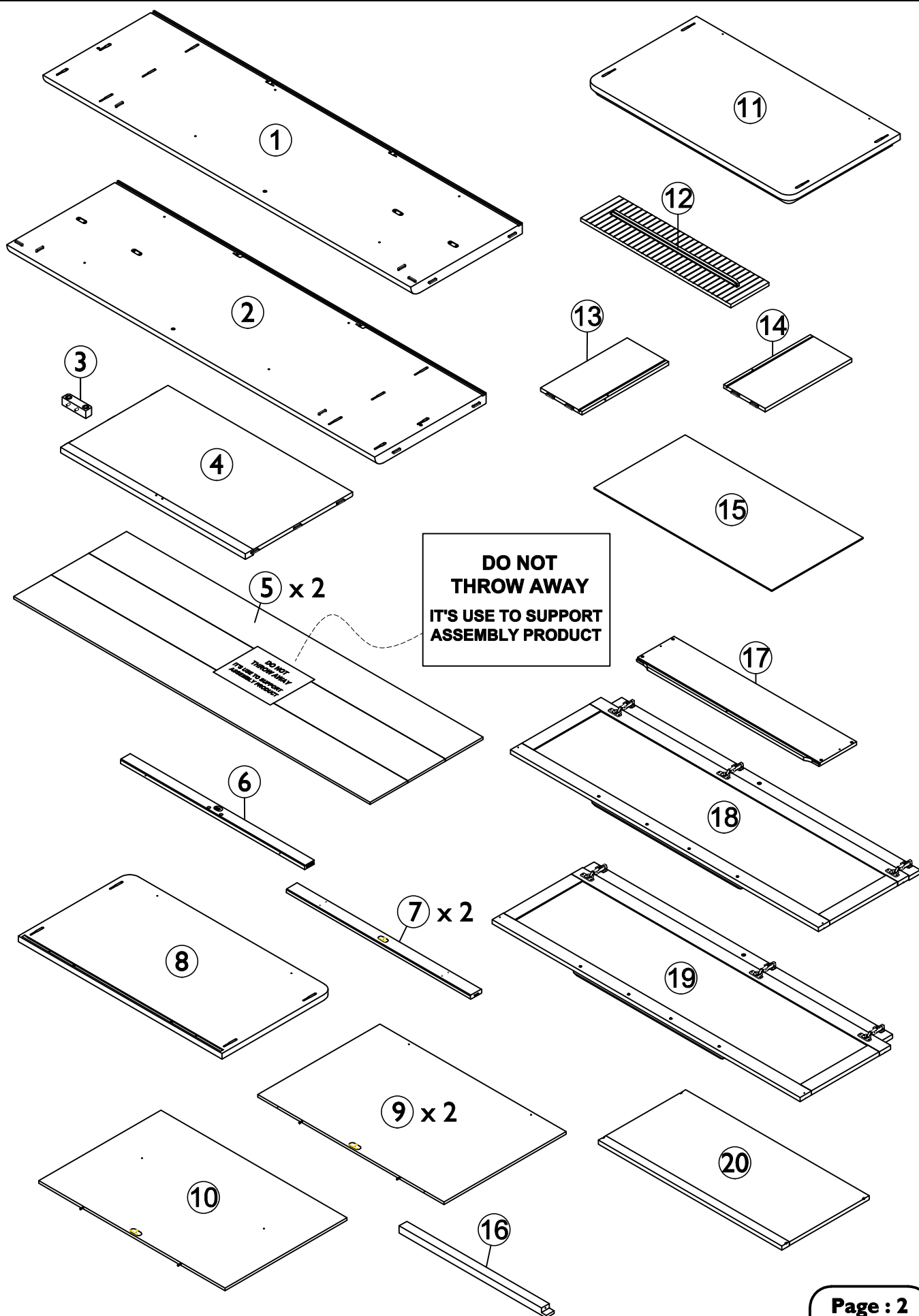
This product takes approximately **30-40 MINUTES** to assemble with **2 PEOPLE**.

All assembly should be performed on a flat, stable, clean and soft surface.

This product is **HEAVY**, it should be assembled as near as possible to the point of use. **TAKE CARE WHEN LIFTING** to avoid personal injury and (or) damage to the product.

The fitting pack contains **SMALL ITEMS** which should be **KEPT AWAY FROM YOUNG CHILDREN**.









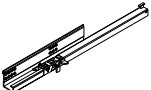

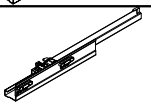

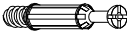

IMPORTANT: Retain these instructions for future reference.



Item	Description	Qty.
1	Side panel right	x 1
2	Side panel left	x 1
3	Door stopper	x 1
4	Fixed shelf frame	x 1
5	Honeycomb used as support for Assembly	x 2
6	Top front rail	x 1
7	Middle back rail	x 2
8	Top panel	x 1
9	Back panel A	x 2
10	Back panel B	x 1

Item	Description	Qty.
11	Bottom frame	x 1
12	Drawer front	x 1
13	Drawer side left	x 1
14	Drawer side right	x 1
15	Drawer bottom	x 1
16	Support Drawer bottom	x 1
17	Drawer back	x 1
18	Door frame left	x 1
19	Door frame right	x 1
20	Removable shelf	x 1

Fittings and parts checklist

A	Hanger rail support 20 x 14 x 50mm		x 4	H	Cam lock Ø15 x 13.9mm		x 1
B	Hi-Lo Screw Ø4 x 50mm		x 8	K	Round head screw Ø4 x 30mm		x 1
C	Round head screw Ø4 x 25mm		x 4	L	Hex head bolt M6 x 25mm		x 2
D	Felt Ø20x6mm		x 6	M	Allen key M4x30x110mm		x 1
E	Tandem runner left		x 1	N	Shelf pin		x 4
F	Tandem runner right		x 1	P	Clothes rail bar		x 1
G	Cam screw 34 x 11mm		x 1	Q	Hi-Lo screw Ø4 x 38mm		x 2

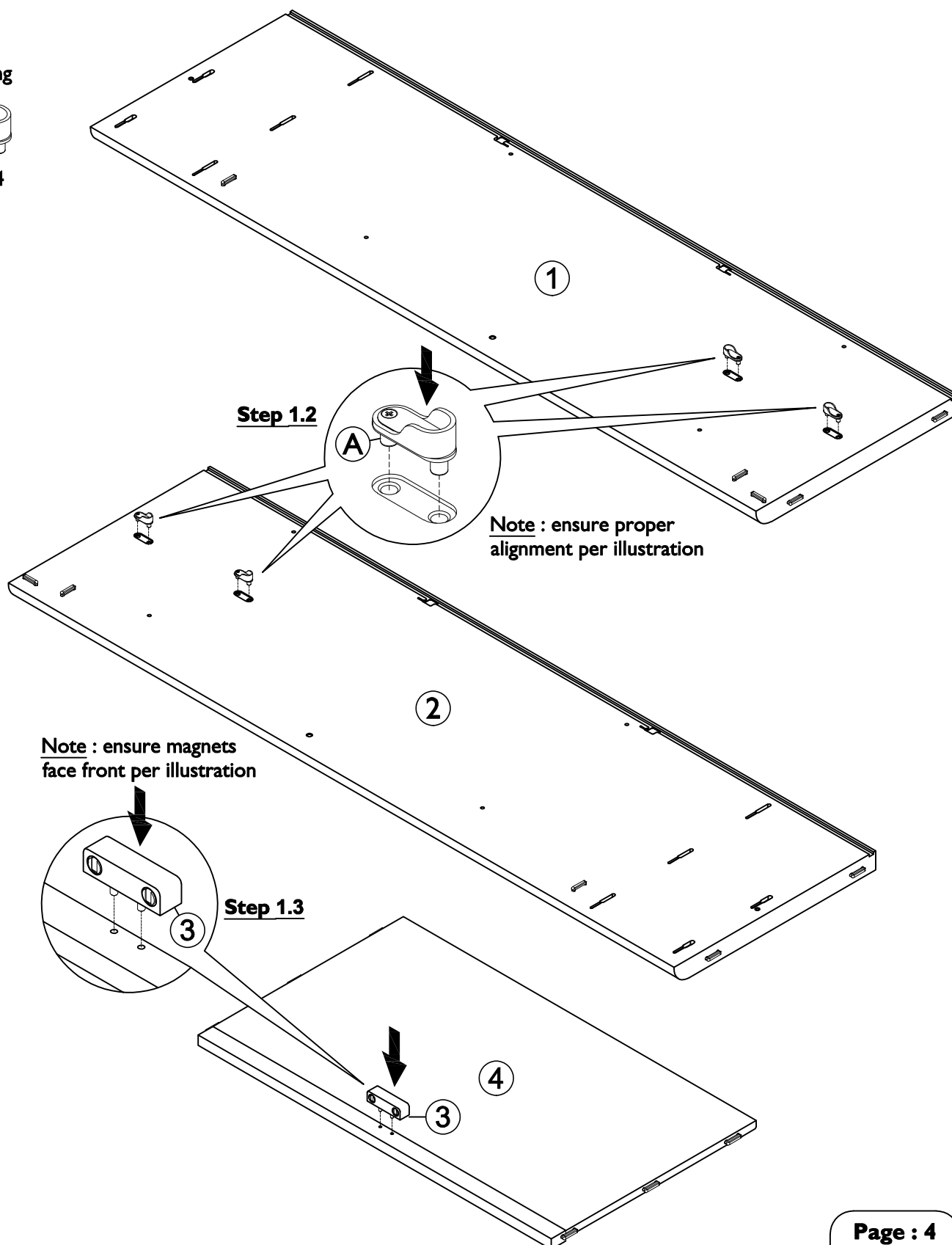
Step by step assembly instructions

- Step 1**
- 1.1 : Lay all parts onto a flat, stable, clean and soft surface.
 - 1.2 : Push 4x hanger rail supports (A) onto the pre-drilled holes on side panels (1) & (2) as shown.
 - 1.3 : Attach door stopper (3) into the pre-drilled holes onto fixed shelf frame (4) as shown.

Fitting

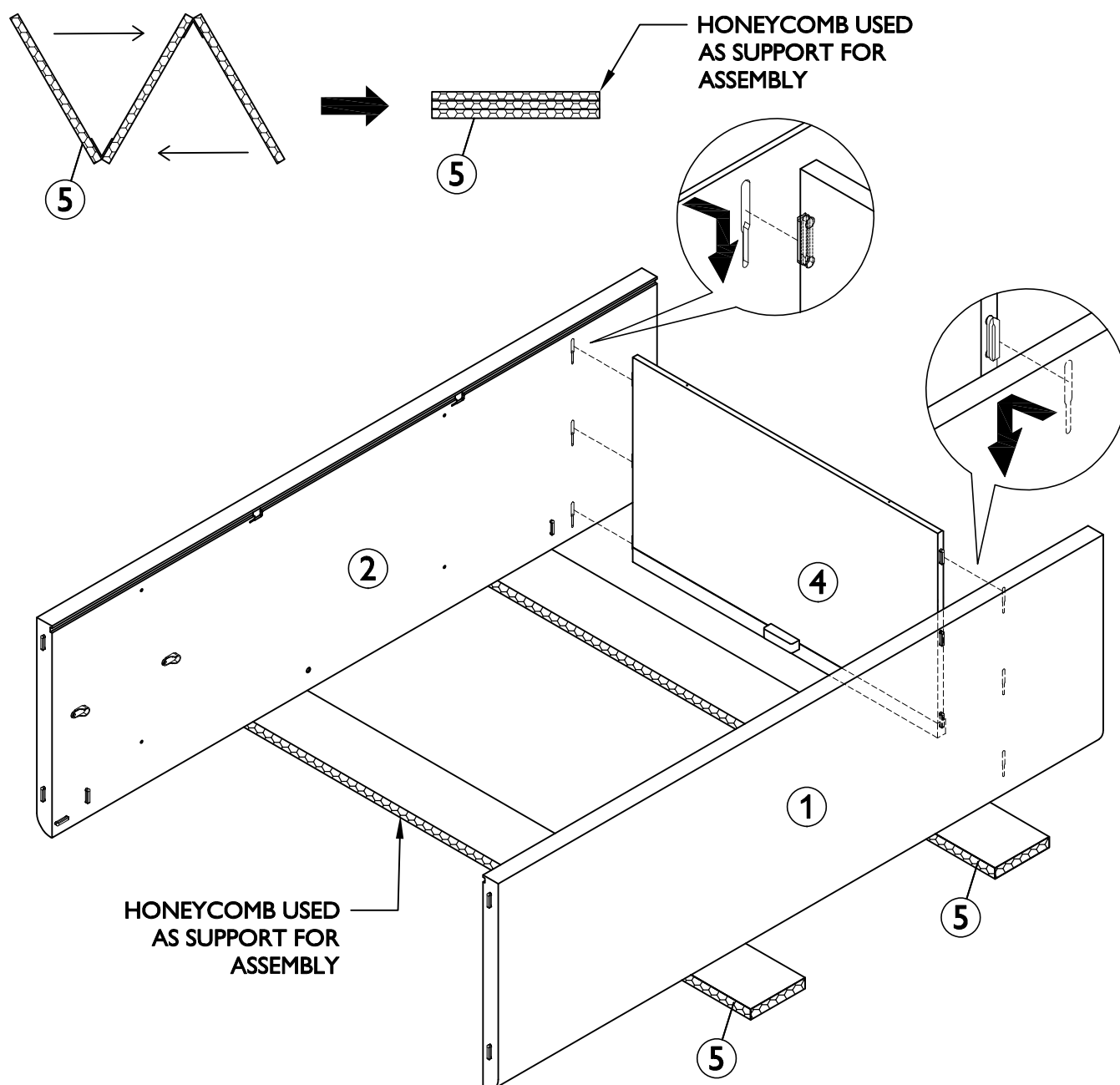


A x 4



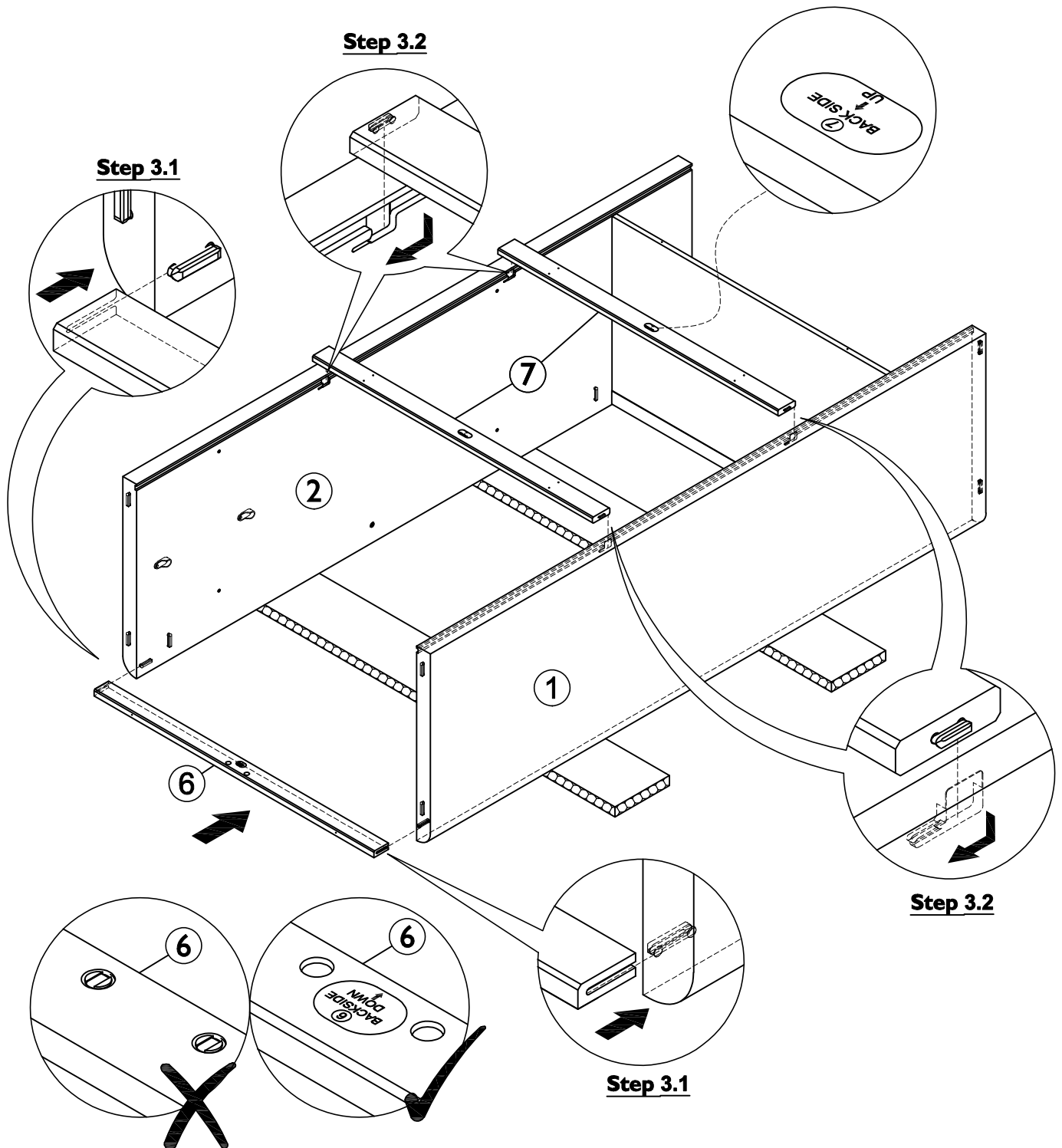
Step by step assembly instructions

- Step 2** Take the honeycomb sheet marked in the packaging, fold it as shown. Lay the side panel right (1) and side panel left (2) sideways on the support panels as shown. Attach fix shelf frame (4) onto side panels (1) & (2) by inserting dowels into the corresponding slots on the side panels (1) & (2). Push the fixed shelf frame (4) downward to lock dowels in place.



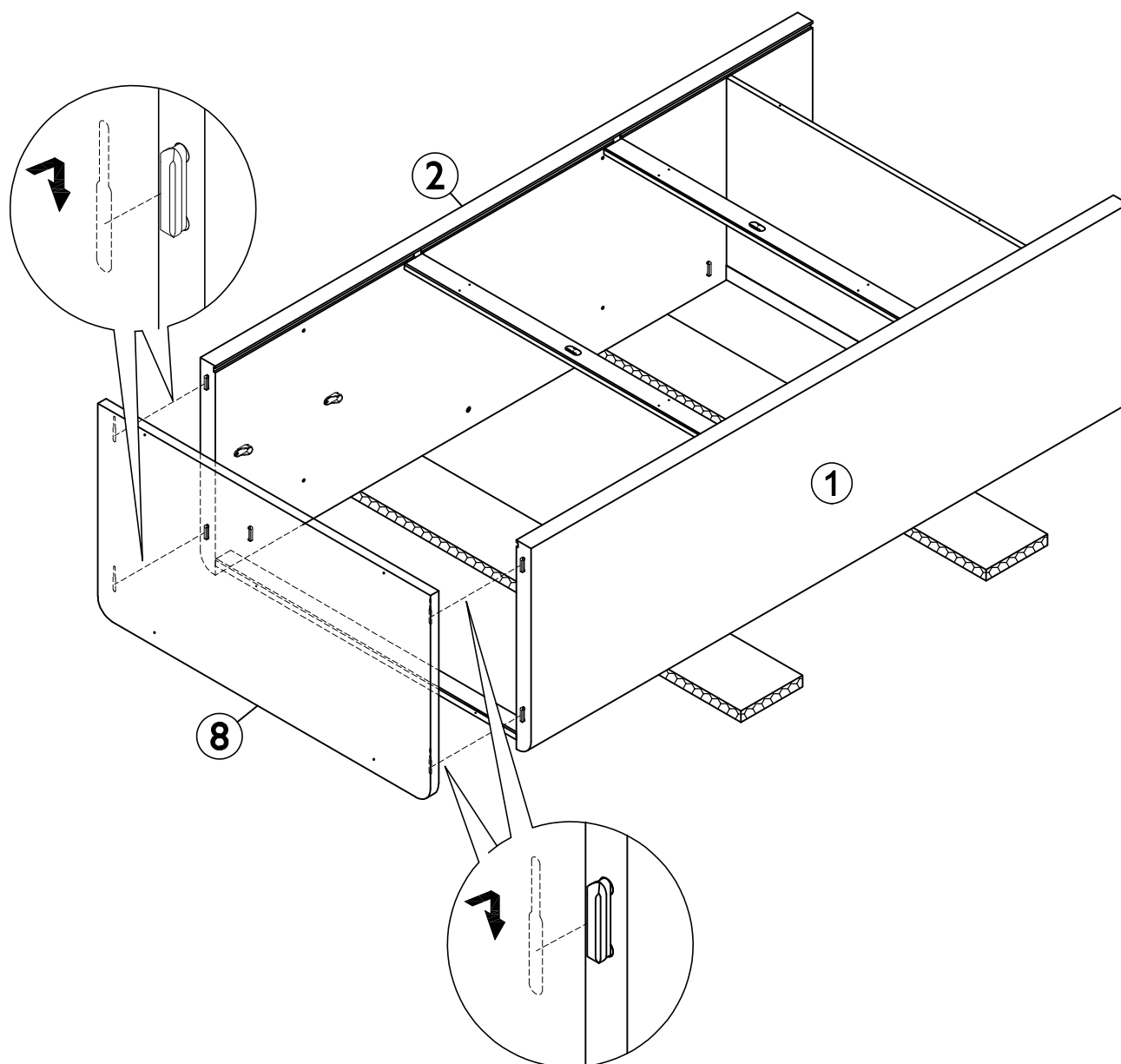
Step by step assembly instructions

- Step 3**
- 3.1 : Attach top front rail (6) into side panels (1) & (2) by inserting dowels into the corresponding slots on the top front rail (6) as shown.
- 3.2 : Attach 2x middle back rails (7) into side panels (1) & (2) by inserting dowels into the corresponding slots on the side panels (1) & (2) as shown.
Push the middle back rails (7) forward to lock dowels in place.



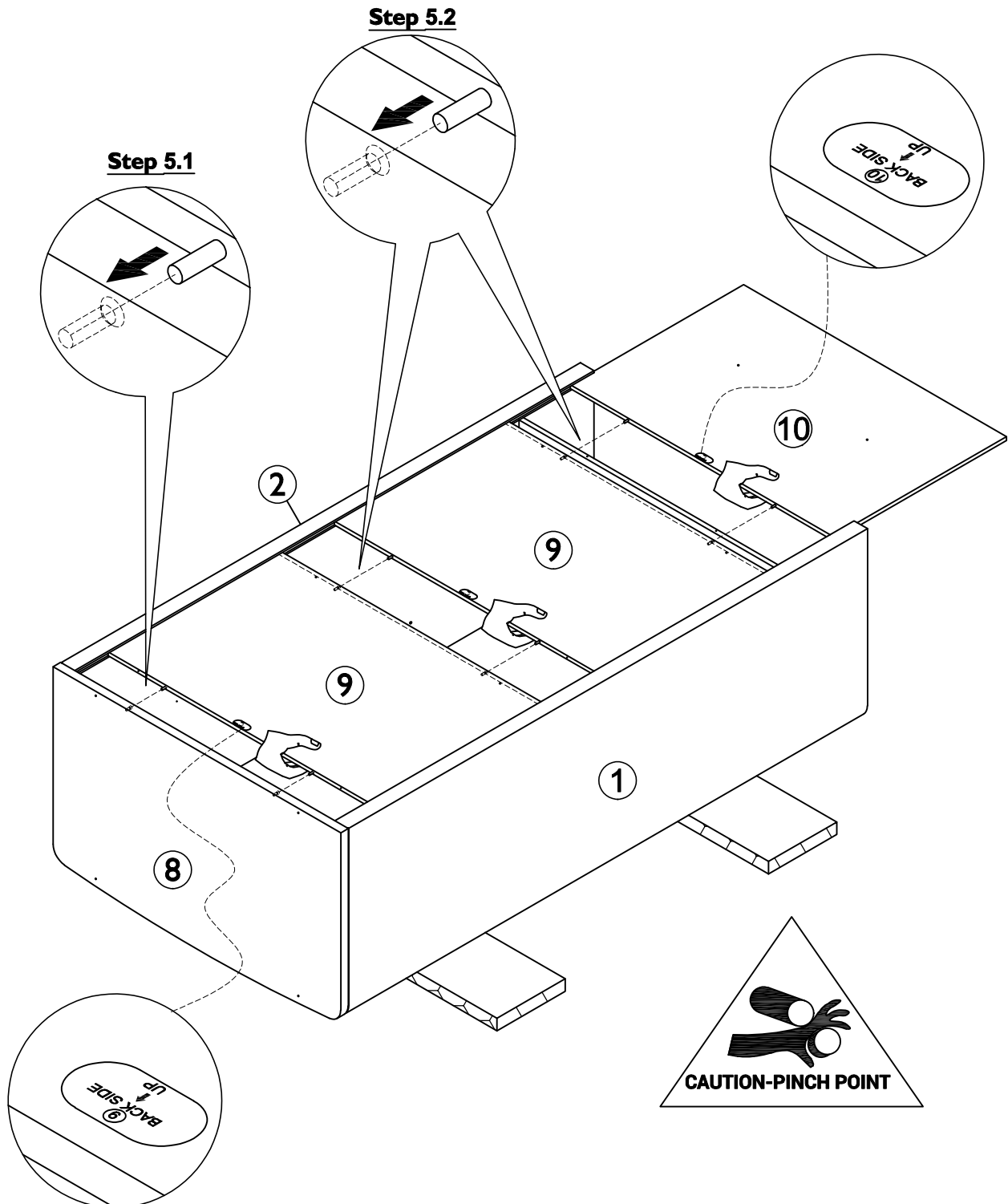
Step by step assembly instructions

- Step 4** Attach top panel (8) into side panels (1) & (2) by inserting dowels into the corresponding slots on the top panel (8). Push the top panel (8) downward to lock the dowels in place, as shown.



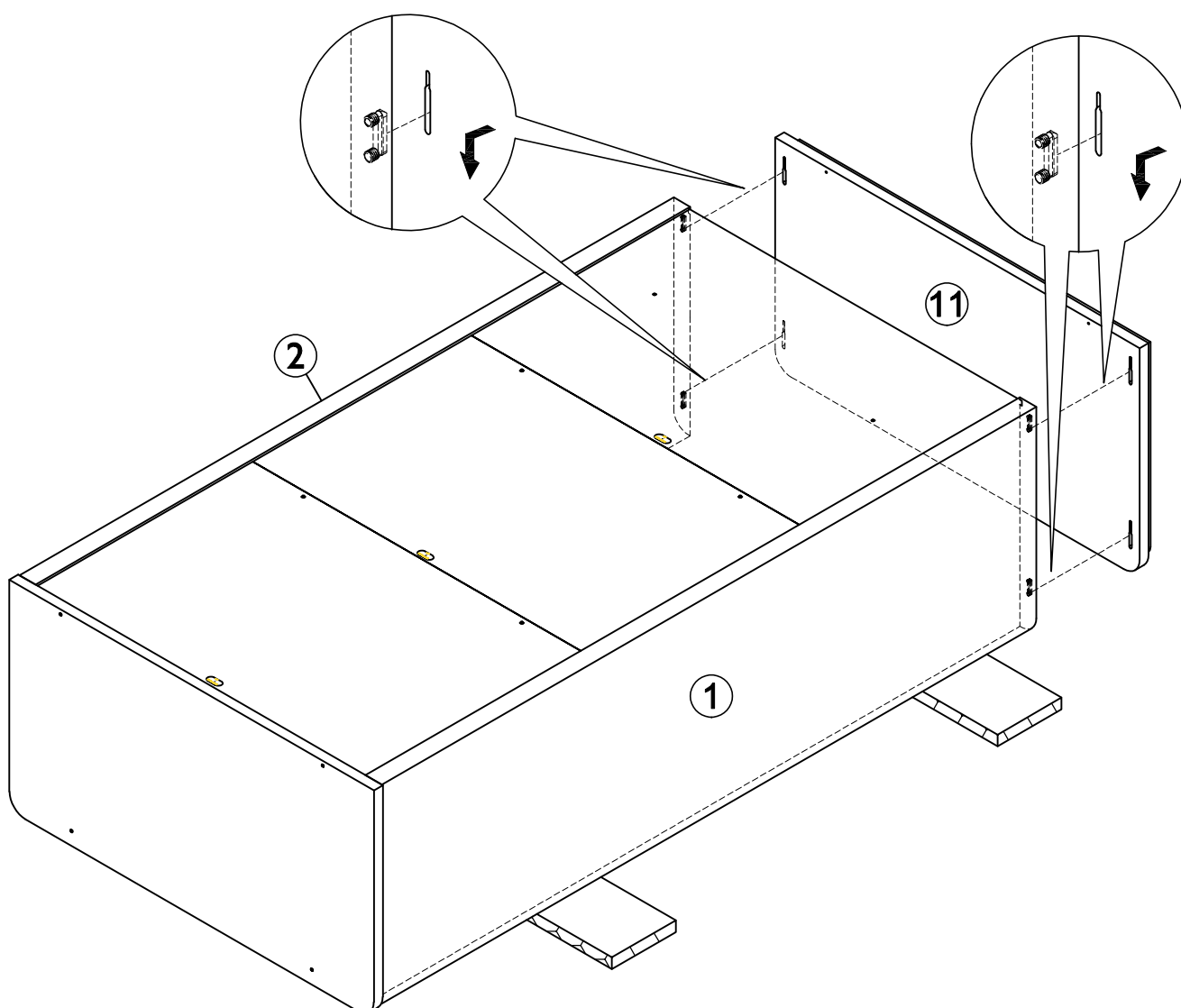
Step by step assembly instructions

- Step 5** 5.1 : Attach a back panel A (9) onto the structure assembled in **Step 4** as shown. Ensure back panel A (9) is inserted into the groove in the side panels and spring pin is inserted correctly into the drilled holes.
- 5.2 : Continue, attach back panel A (9) and back panel B (10) onto the structure assembled in **Step 4** as shown. Ensure the back panels are inserted into the groove in the side panels and spring pin are inserted correctly into the drilled holes.



Step by step assembly instructions

- Step 6** Attach bottom frame (11) into side panels (1) & (2) by inserting dowels into the corresponding slots on the bottom frame (11). Push the bottom frame (11) downward to lock the dowels in place, as shown.



Step by step assembly instructions

- Step 7**
- 7.1 : Secure top panel (8) to part (9) using 4x Hi-Lo screws (B) as shown. Use a pozi screwdriver to turn fittings (B) clockwise fix.
- 7.2 : Secure bottom frame (11) to part (10) using 2x Hi-Lo screws (B) as shown. Use a pozi screwdriver to turn fittings (B) clockwise fix.
- 7.3 : Secure part (10) to part (4) using 2x Hi-Lo screws (B) as shown. Use a pozi screwdriver to turn fittings (B) clockwise fix.
- 7.4 : Secure parts (9) to parts (7) using 4x round head screw (C) as shown. Use a screwdriver to turn fittings (C) clockwise fix.
- 7.5 : Remove the plastic from 6x felts (D) and stick felts (D) onto under of part (11) as shown.
- 7.6 : Stand the unit upright.

Fitting



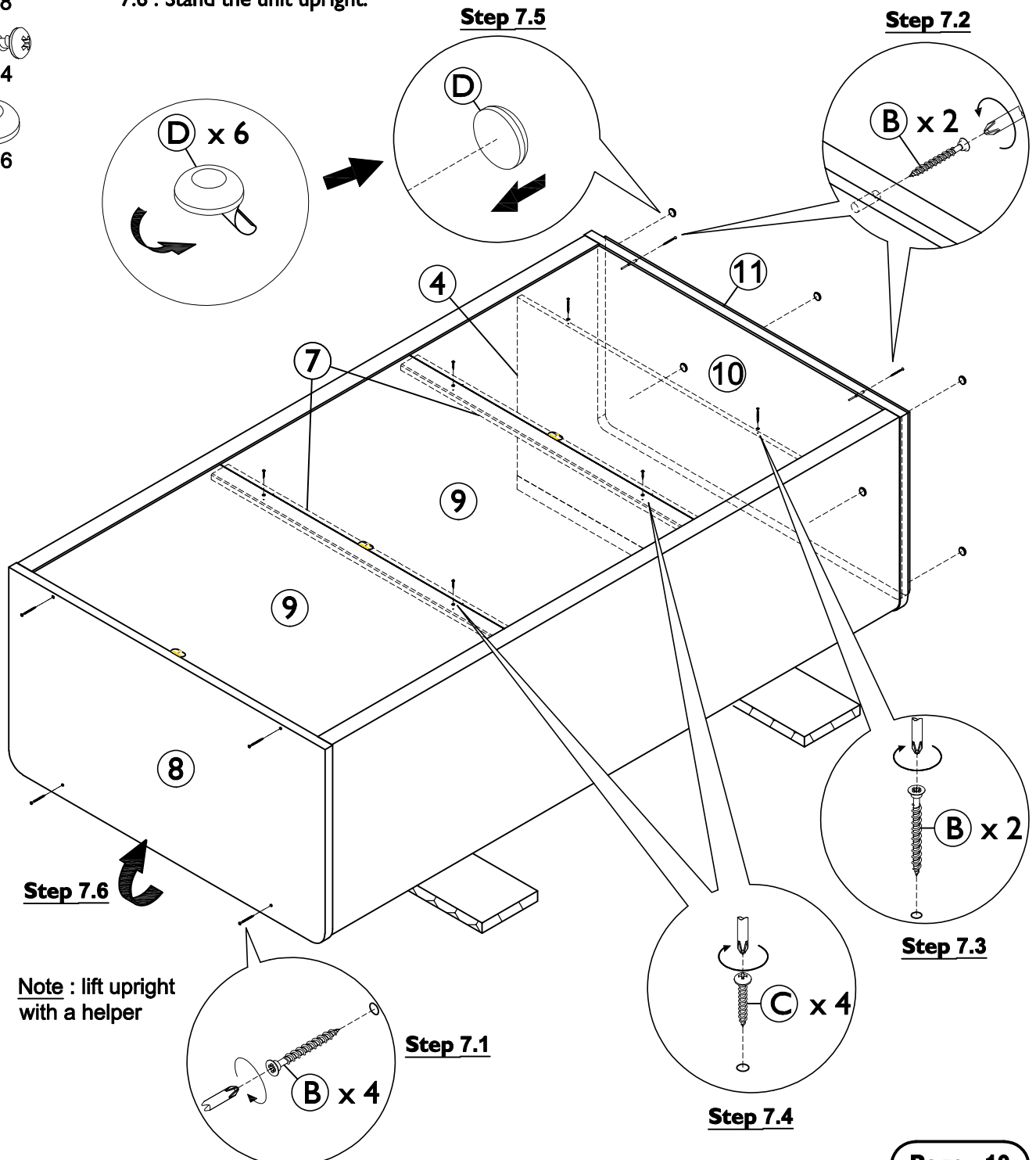
B x 8



C x 4



D x 6



Step 7.6

Note : lift upright
with a helper

Step 7.1

Step 7.4

Step 7.3

Step 7.2

Page : 10

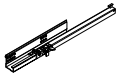
IW-17-3052-80-2-0

Step by step assembly instructions

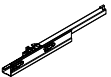
Step 8 Attach runner left (E) into the slot on side panel left (2) & runner right (F) into the slot on side panel right (1). Continue pushing the runners toward outside of cabinet to lock the latches in place.

Note : The metal edges may be sharp, please use care when attaching to the drawer.

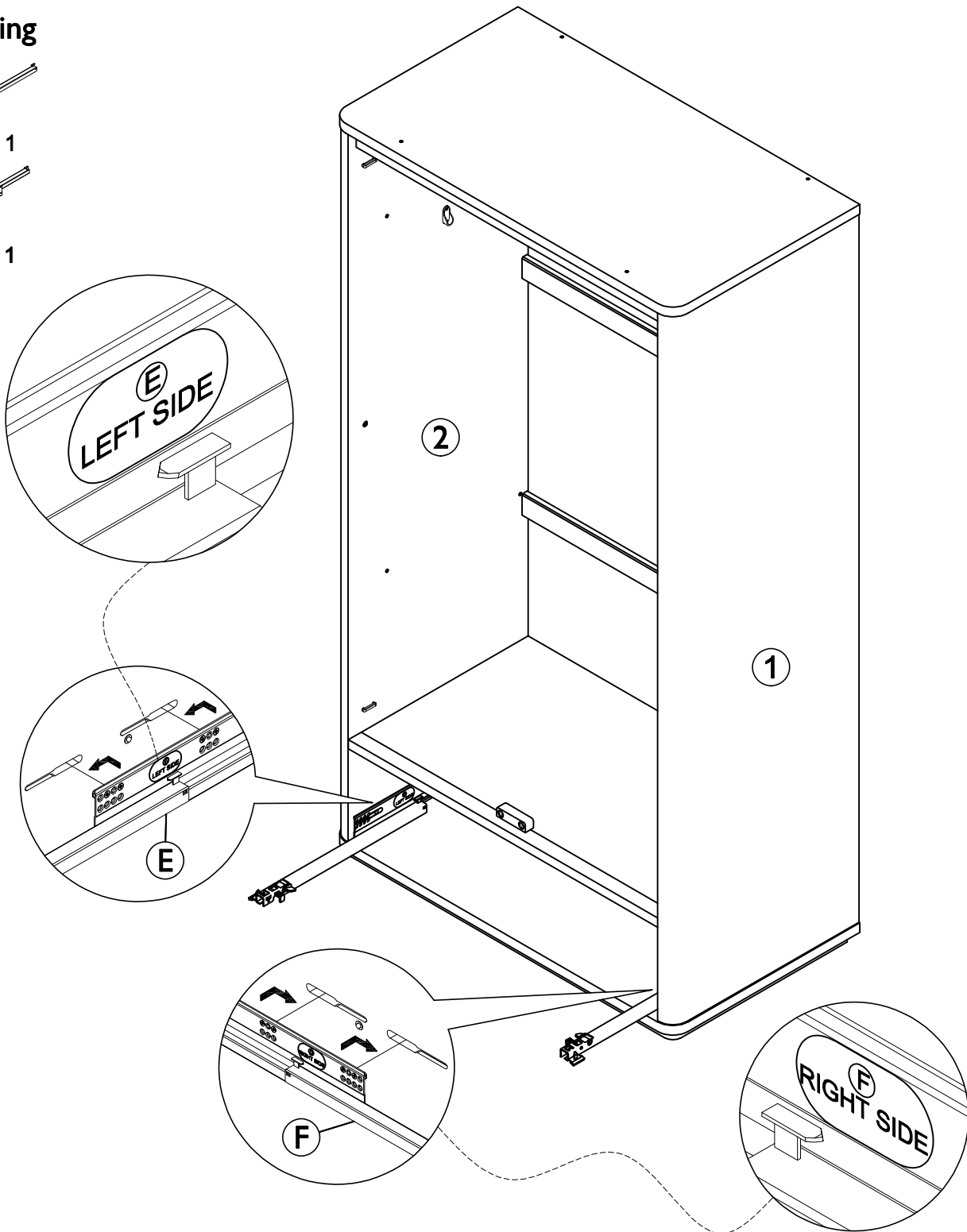
Fitting



E x 1



F x 1



Step by step assembly instructions

Step 9

Assemble the drawer:

Fitting



G x 1



H x 1



K x 1



Q x 2

9.1 : Lay drawer front (12) onto a flat, stable, clean and soft surface.

Attach 1x cam screw (G) into the pre-drilled holes on front drawer (12) as shown. Use a pozi screwdriver to turn fittings (G) clockwise to fix.

9.2 : Attach drawer sides (13) & (14) to drawer front (12) by inserting the dowels into slots on drawer front (12). Push drawer sides (13) & (14) toward the top of drawer front (12) to lock them in place, as shown.

9.3 : Slide drawer bottom (15) into the slots inside drawer sides (13) & (14) as shown. Ensure the drawer bottom (15) are placed completely in the slot of drawer front (12).

9.4 : Attach drawer support bottom (16) onto drawer front (12) as shown. Ensure cam screw (G) is aligned correctly with the holes of mating parts before attaching.

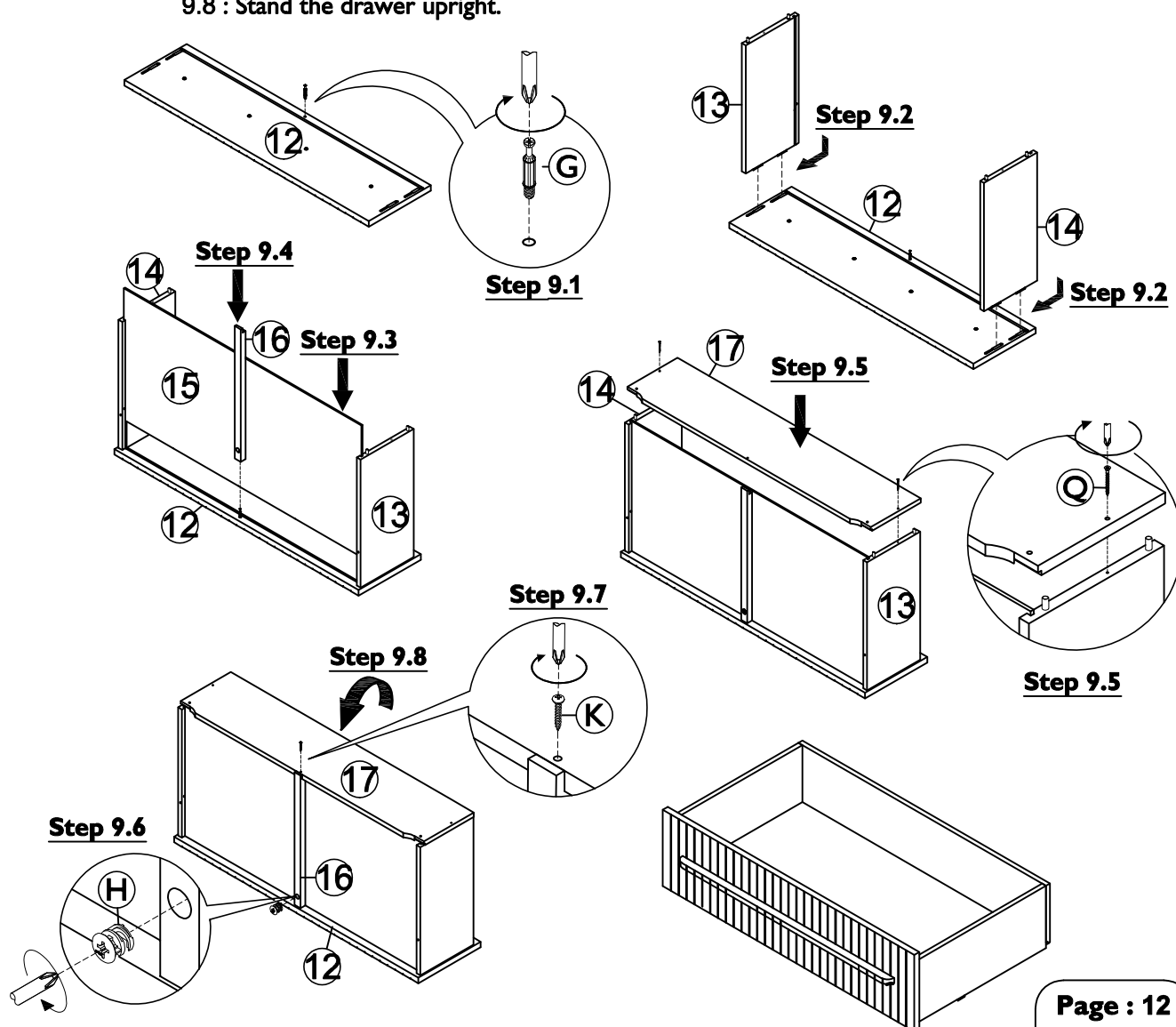
9.5 : Attach drawer back (17) by fitting the pins on drawer sides (13) & (14) into the holes on drawer back (17) as shown. Use a pozi screwdriver to turn the 2x Hi-Lo screws (Q) clockwise to secure the part (17) to the parts (13) & (14) as shown.

9.6 : Secure drawer support bottom (16) to part (12) using 1x cam locks (H) as shown. Use a pozi screwdriver to turn fittings (H) clockwise to fix.

9.7 : Secure drawer support bottom (16) to drawer back (17) using 1x round head screw (K) as shown. Use a screwdriver to turn fittings (K) clockwise to fix.

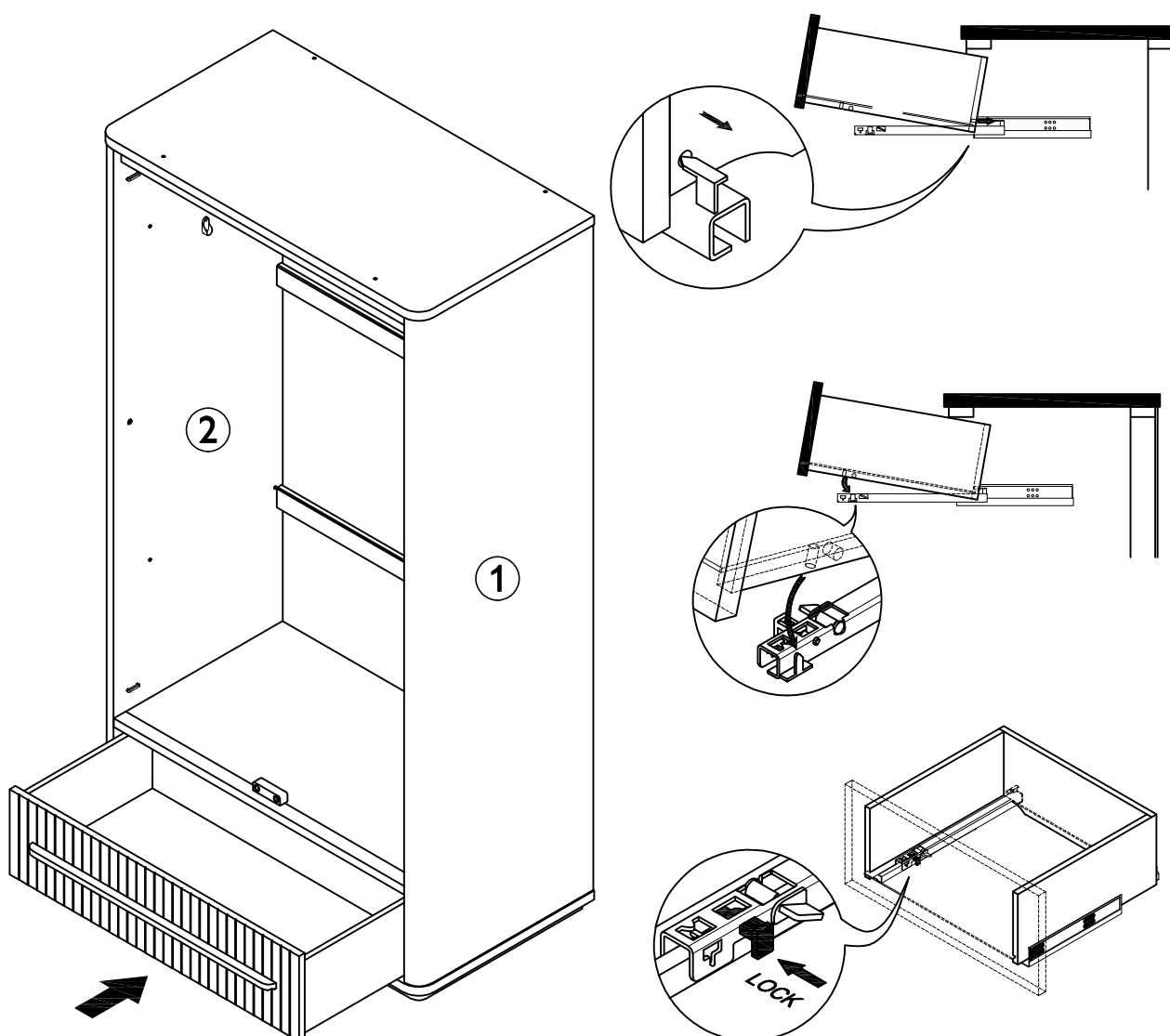
Important: This connection is permanent, so please be careful.

9.8 : Stand the drawer upright.



Step by step assembly instructions

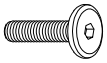
Step 10 Insert the assembled drawer in **Step 9** into cabinet as shown.



Step by step assembly instructions

- Step 11** 11.1 : Attach doors (18) & (19) to side panels (1) & (2) by inserting dowels into the corresponding slots on doors (18) & (19) as shown. Ensure dowels are locked in place.
- 11.2 : Secure doors (18) and (19) to sides panel (1) and (2) using 2x hex head bolts (L) into the recessed fittings located on parts (1) and (2) as shown.
- Make sure the holes on the doors are properly aligned with the holes on the side panels (1) & (2) before attaching. Use allen key (M) to turn the fittings (L) clockwise to fix.

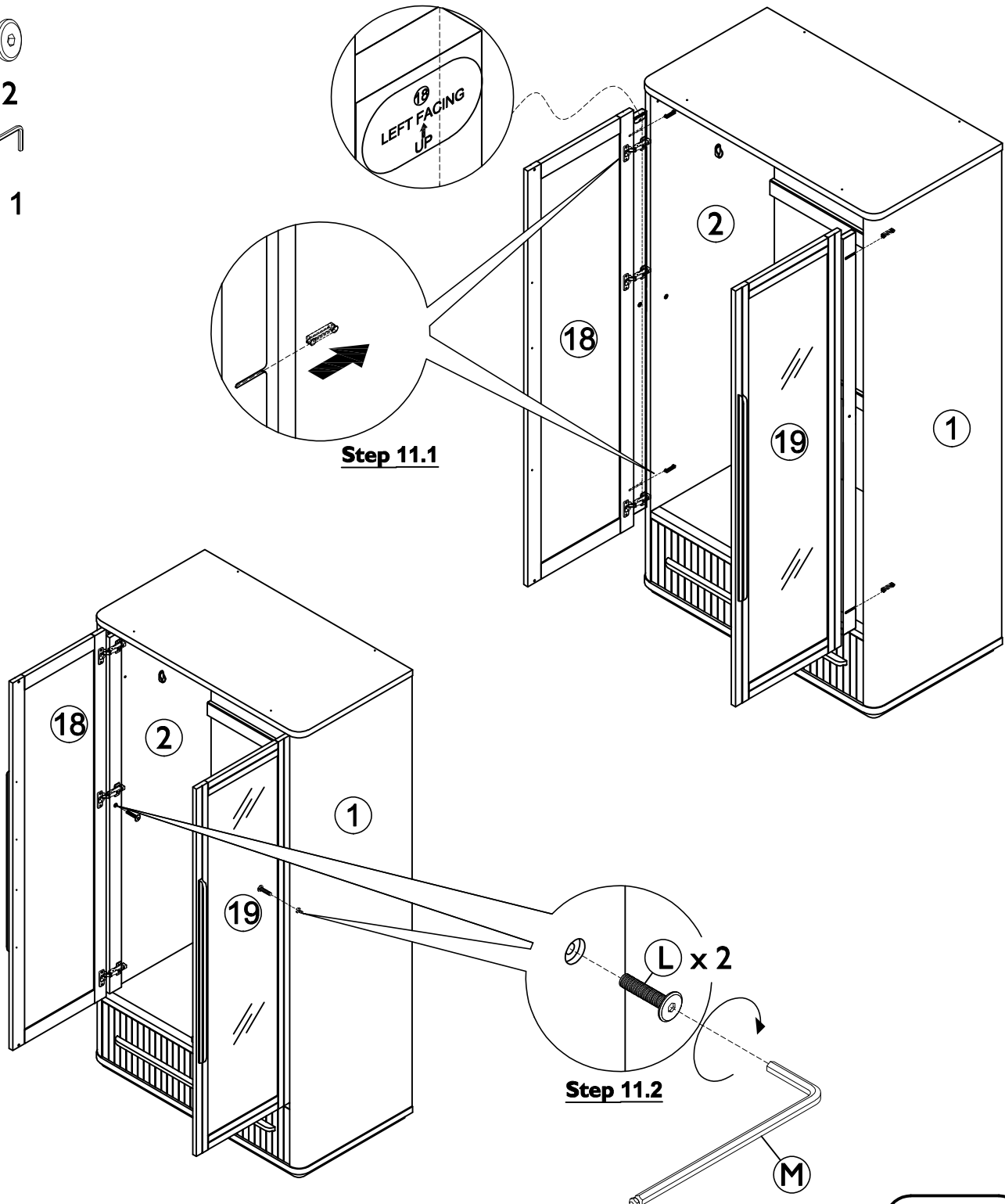
Fitting



L x 2



M x 1



Step by step assembly instructions

- Step 12**
- 12.1 : Screw 2x shelf pins (N) into the insert fittings in left side panel (2) as shown.
 12.2 : Tilt removable shelf (20) to a suitable angle as shown in the picture so as to slide it in.
 12.3 : Slide removable shelf (20) into the cabinet. Ensure the holes on removable shelf (20) are facing down, then lower the left side of part (20) onto the pins of shelf pins (N) as shown.
 12.4 : Lift up right side of removable shelf (20).
 12.5 : Screw 2x shelf pins (N) into the insert fittings in right side panel (1) as shown.
 12.6 : Lower removable shelf (20) onto the pins of shelf pins (N) as shown.
 12.7 : Place clothes rail bar (P) onto hanger rail supports (A) on left & right sides of cabinet as shown.

Note : clothes rail bar (P) can be installed in both up and down of the cabinet.

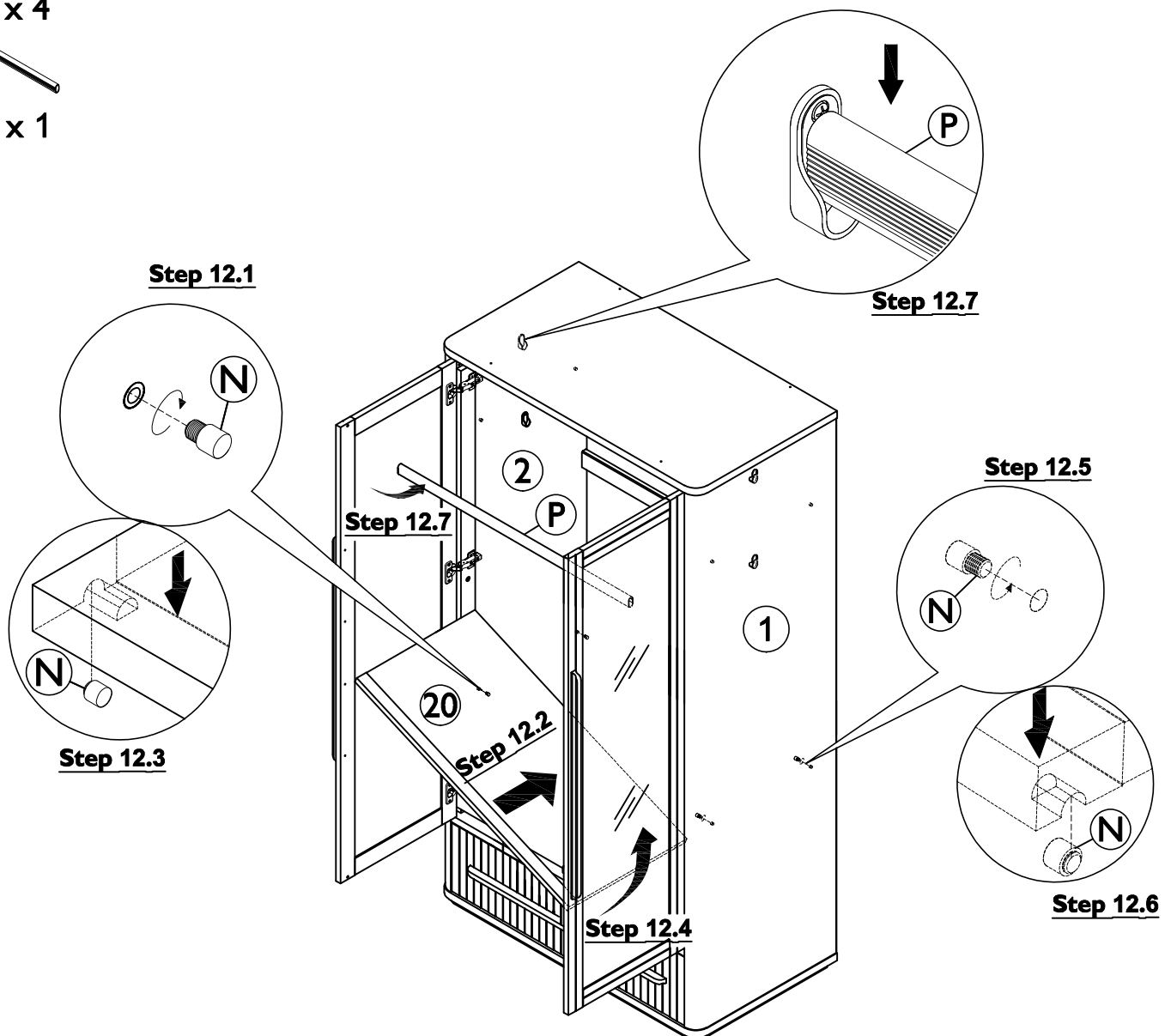
Fitting



N x 4

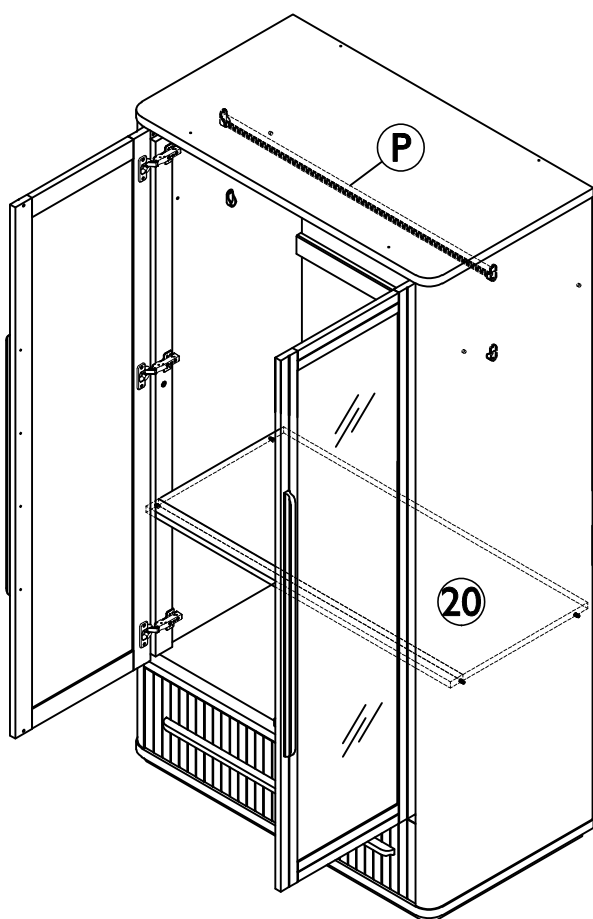


P x 1

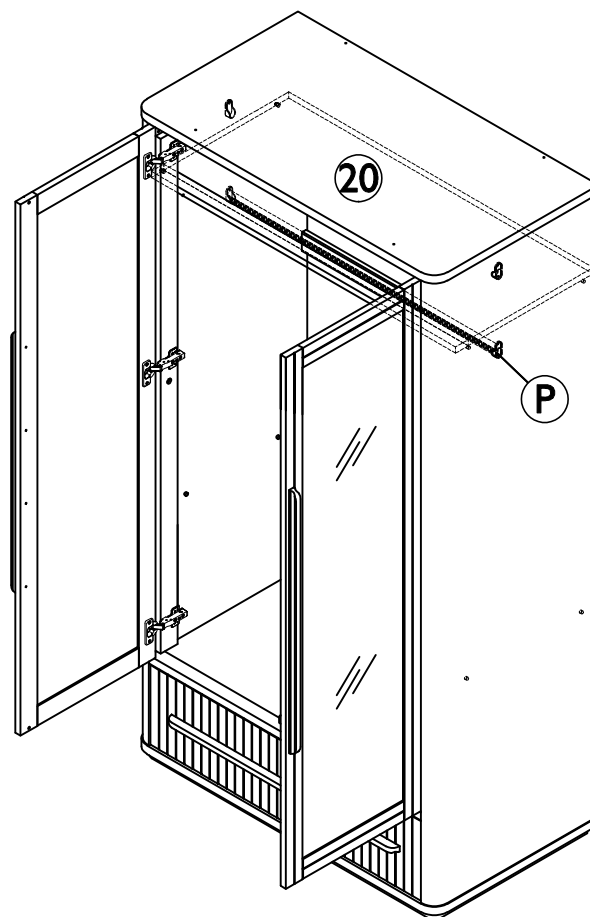


Step by step assembly instructions

Note : The clothes rail (P) and removable shelf (20) can be installed into the wardrobe in 2 ways as shown.



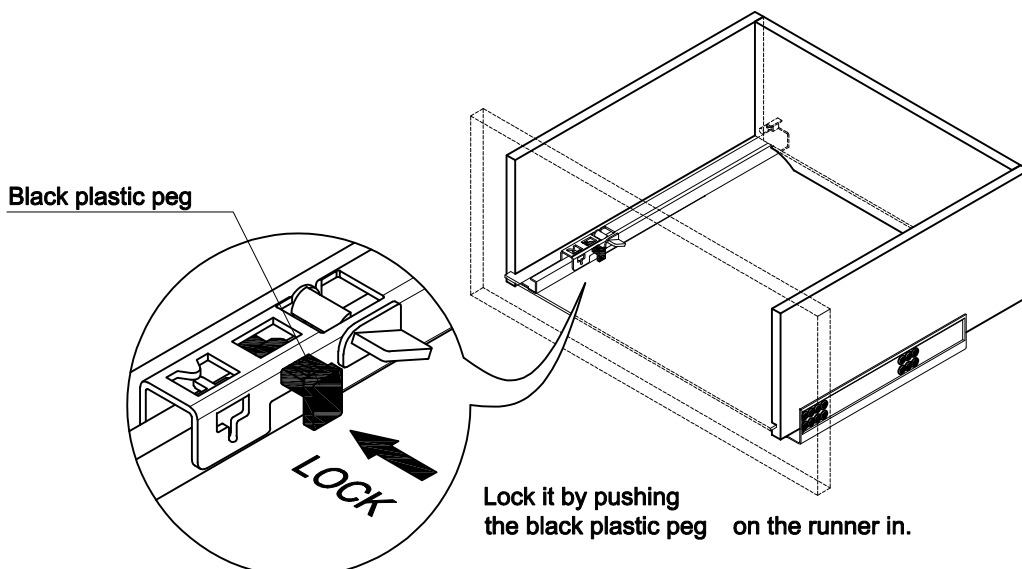
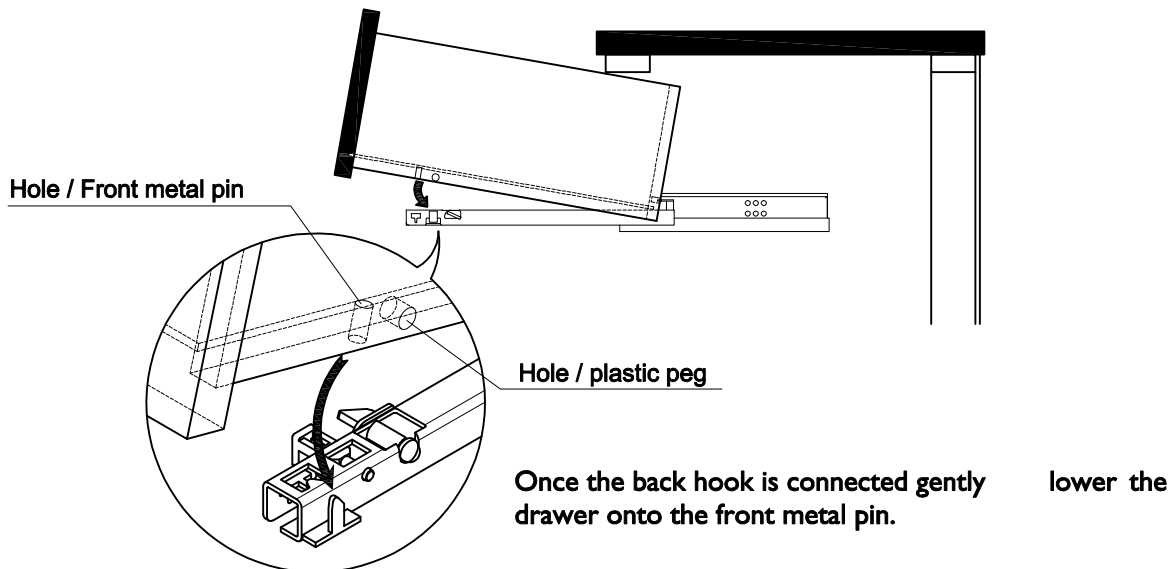
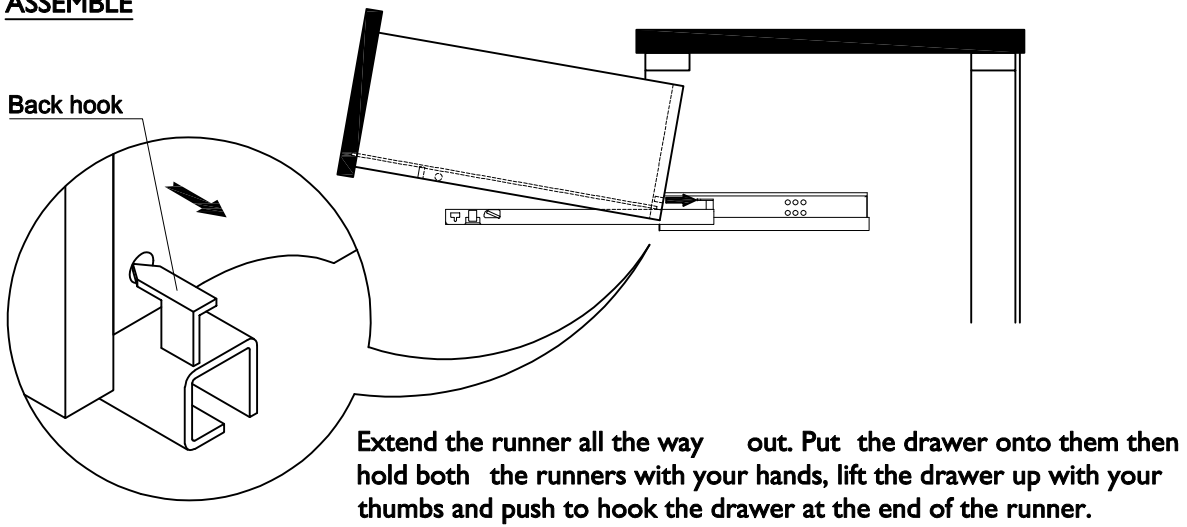
Option 1



Option 2

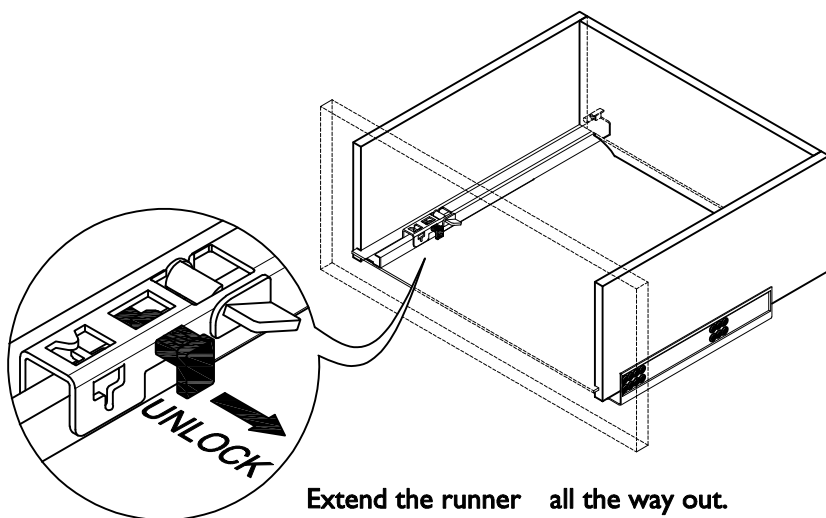
TANDEM RUNNER ADJUSTMENT INSTRUCTION

ASSEMBLE

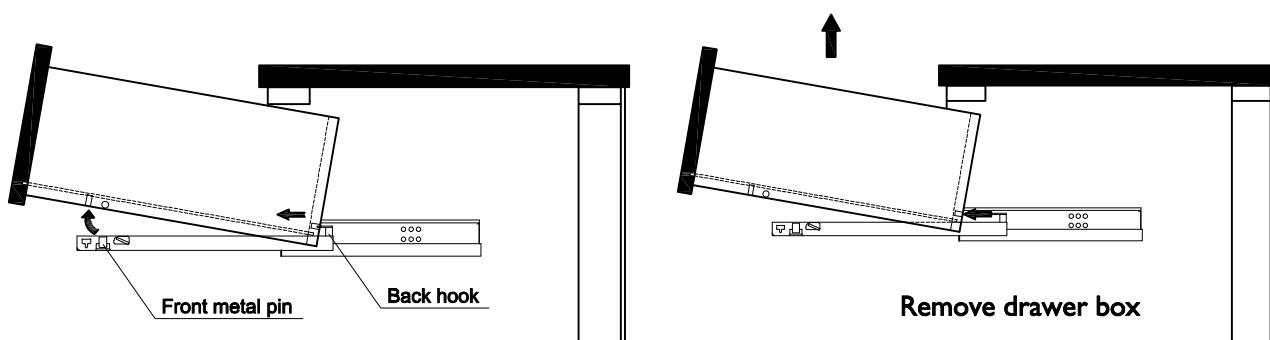


TANDEM RUNNER ADJUSTMENT INSTRUCTION

REMOVE

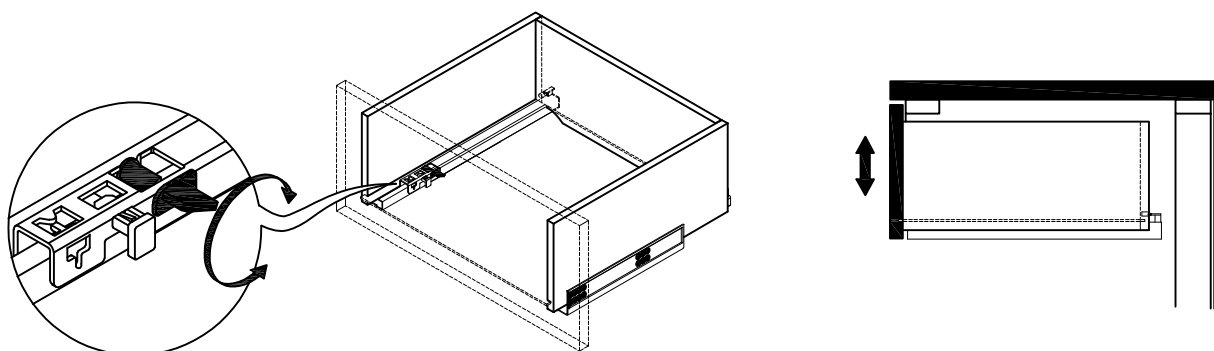


Extend the runner all the way out.
Unlock by pulling the black plastic peg on the runner out.



Hold runners with both of your hands.
Carefully lift the drawer front up from the front metal pin, then slide forward to remove from back hooks.

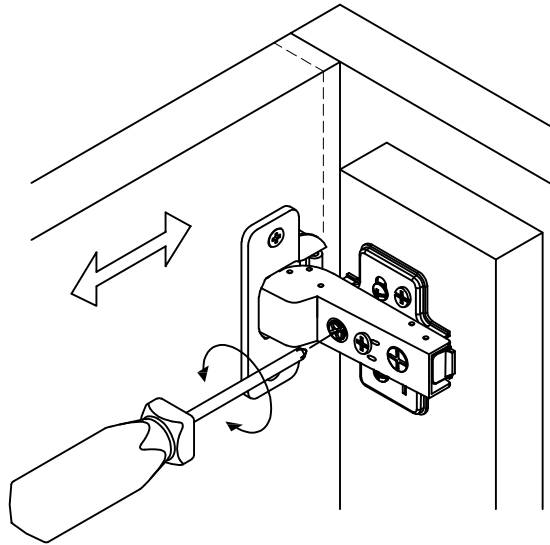
VERTICAL ADJUSTMENT (± 2.5 mm)



HINGE ADJUSTMENT INSTRUCTIONS

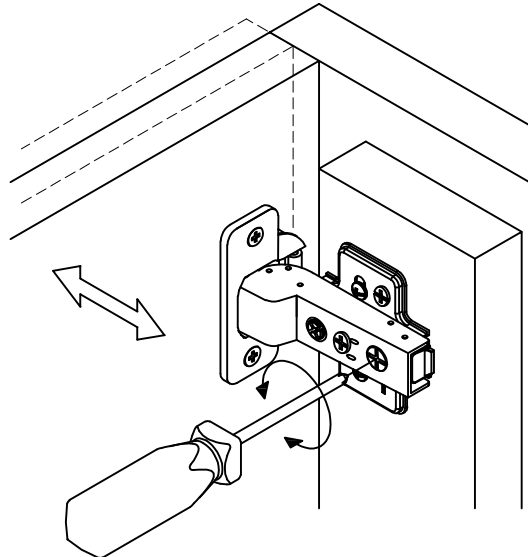
LATERAL ADJUSTMENT

by screw adjustment.



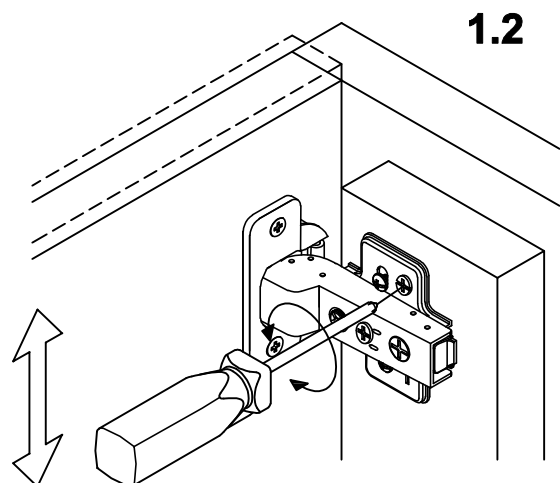
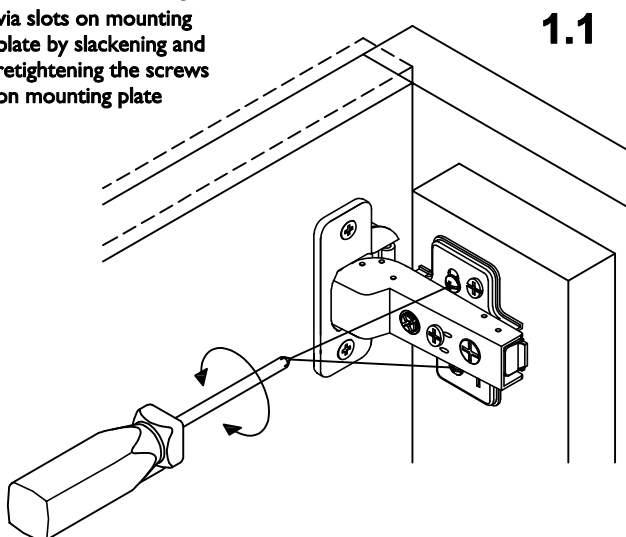
FRONT-TO-BACK

by slackening and retightening
the hinge-arm mounting screw.



VERTICAL ADJUSTMENT

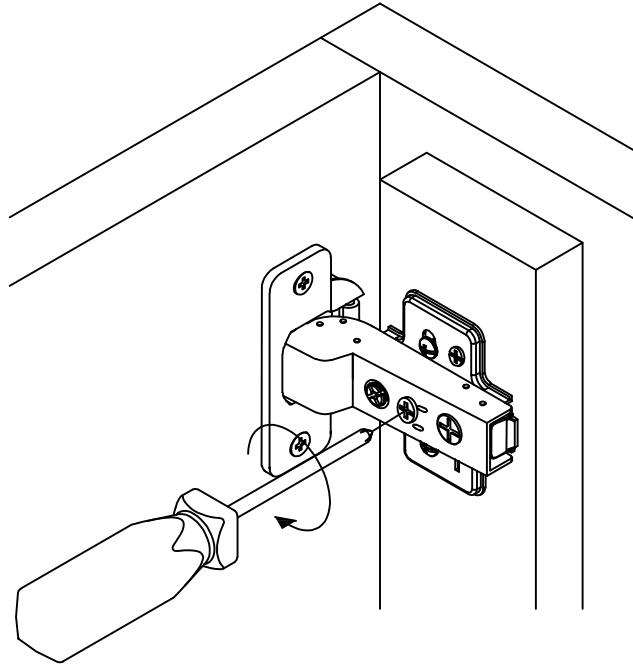
via slots on mounting
plate by slackening and
retightening the screws
on mounting plate



HINGE ADJUSTMENT INSTRUCTIONS

SLOW DOWN CLOSING

by screw adjustment to clockwise.



SPEED UP CLOSING

by screw adjustment to counter clockwise.

